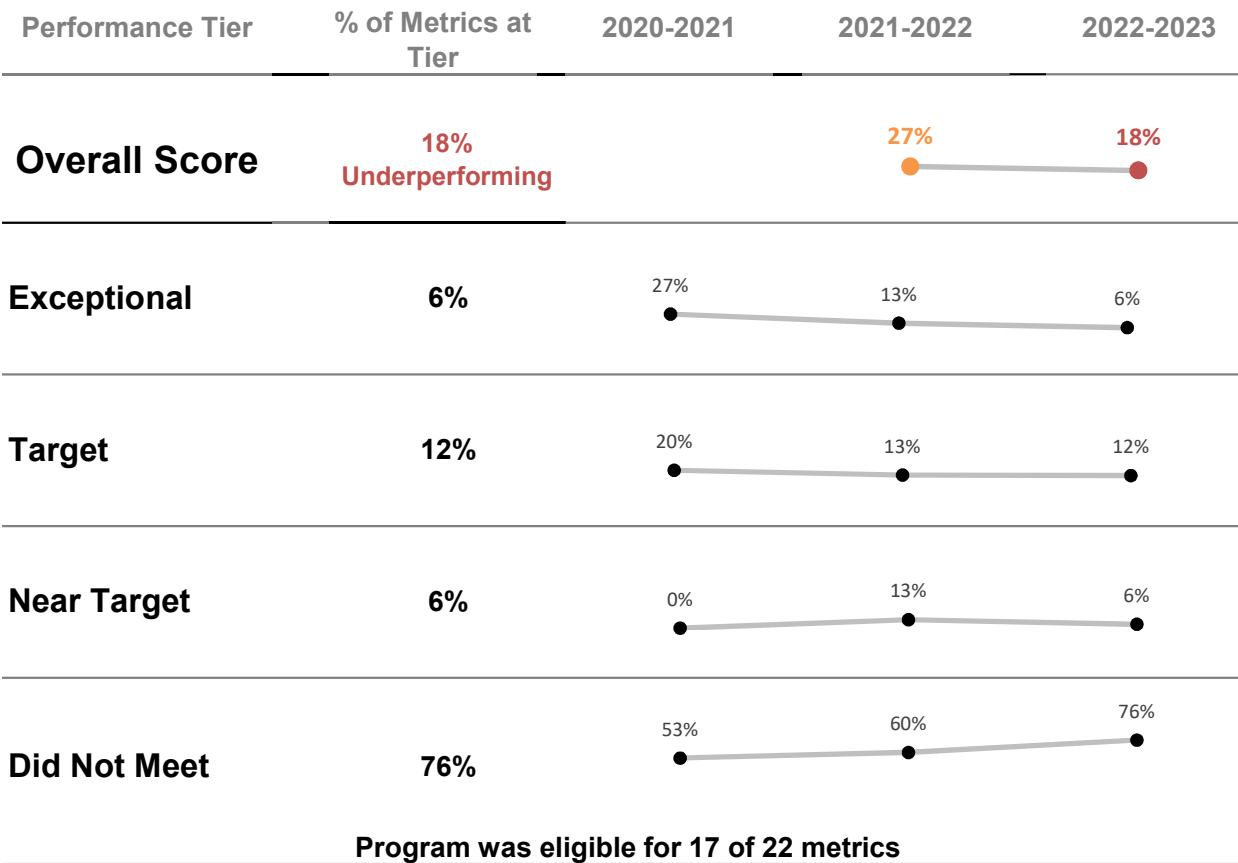
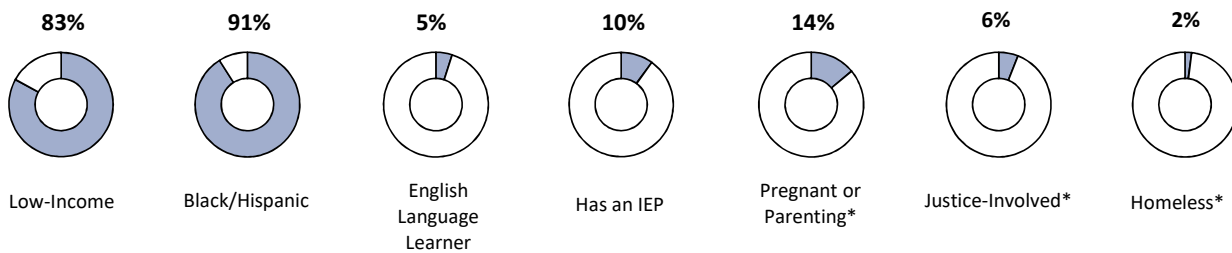


# El Centro de Estudiantes

## Program Information

Governance	Contracted	Program Type	Accelerated
Address	1241 N Taney St Philadelphia, PA 19121	Grade Range	9-12
Phone	215-346-8970	Total Enrollment	170
Website	<a href="https://www.elcentrobpp.org/">https://www.elcentrobpp.org/</a>	Average Daily Membership	123

## Student Demographics



\* Self-reported data

# Achievement

Metric	Metric Value	Performance Tier
--------	--------------	------------------

## Keystone Literature

Percent Proficient or Advanced

[Distribution by Performance Level](#)

Advanced: Insufficient Sample

Proficient: Insufficient Sample

Basic: Insufficient Sample

Below Basic: Insufficient Sample

**- Insufficient Sample -**

(n = 12)

## Keystone Algebra

Percent Proficient or Advanced

[Distribution by Performance Level](#)

Advanced: Insufficient Sample

Proficient: Insufficient Sample

Basic: Insufficient Sample

Below Basic: Insufficient Sample

**- Insufficient Sample -**

(n = 10)

## Keystone Biology

Percent Proficient or Advanced

[Distribution by Performance Level](#)

Advanced: Insufficient Sample

Proficient: Insufficient Sample

Basic: Insufficient Sample

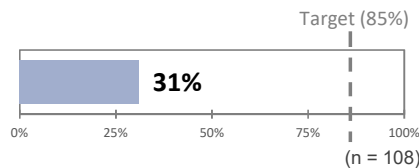
Below Basic: Insufficient Sample

**- Insufficient Sample -**

(n = 17)

## Keystone Literature

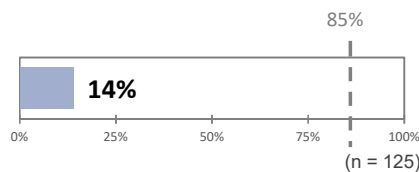
Participation Rate



**Did Not Meet**

## Keystone Algebra

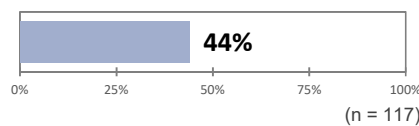
Participation Rate



**Did Not Meet**

## Keystone Biology

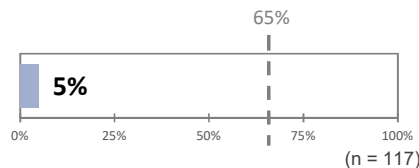
Participation Rate



## Course Performance

Percent Earning at Least a C in All Major Subjects

% Earning at Least Bs: 0%



**Did Not Meet**

\* Self-reported data. See User Guide for performance tier cutpoints.

# Progress

Metric	Metric Value	Performance Tier
Credit Accumulation	<p>Target (75%) 64% (n = 92)</p>	Near Target
Literacy Percent of Students Meeting Target <u>Outcomes for Students Not Meeting Target</u> Not Meeting Target: 8% Insufficient Test Records: 88%	<p>65% 4% (n = 124)</p>	Did Not Meet
Numeracy Percent of Students Meeting Target <u>Outcomes for Students Not Meeting Target</u> Not Meeting Target: 7% Insufficient Test Records: 90%	<p>65% 2% (n = 124)</p>	Did Not Meet
English Learner Achievement Percent Meeting Individual Growth Targets	- Not Available -	

\* Self-reported data. See User Guide for performance tier cutpoints.

# Climate

Metric	Metric Value	Performance Tier
<b>Annual Retention Rate</b> <u>Outcomes for Students Not Retained</u> Transferring Within Network: 2% Transferring Outside Network: 0% No Longer in a Philadelphia Public School: 19%	<p>Target (70%) 78% (n = 130)</p>	Target
<b>% of Students Attending at Least 85% of Days</b> <u>Distribution by Attendance Band</u> <b>Attending at Least 95% of Days: 11%</b> <b>Attending 90-95% of Days: 4%</b> Attending 85-90% of Days: 2% Attending 80-85% of Days: 7% Attending Less than 80% of Days: 76%	<p>50% 16% (n = 170)</p>	Did Not Meet
<b>Average Change in Student Attendance Rate</b>	<p>0 -13% (n = 32)</p>	Did Not Meet
<b>Percent of Students with No Out-of-School Suspensions</b>	<p>95% 99% (n = 170)</p>	Target
<b>Percent of Students Reducing OSS</b>	<p>95% 100% (n = 159)</p>	Exceptional
<b>School Climate Score</b>	- Participation Threshold Not Met -	Did Not Meet
<b>School Instruction Score</b>	- Participation Threshold Not Met -	Did Not Meet
<b>School Relationship Score</b>	- Participation Threshold Not Met -	Did Not Meet
<b>Year-to-Year Academic Staff Retention</b> Percent of teaching/academic support staff returning for the following academic year	- Not Included for Contracted Programs -	

\* Self-reported data. See User Guide for performance tier cutpoints.

# College & Career

Metric	Metric Value	Performance Tier
<b>Annual Graduation Rate</b> Total Number of Students Graduating: 43	<p>Target (80%)</p> <p>58%</p> <p>(n = 48)</p>	<b>Did Not Meet</b>
<b>Student Survey: College &amp; Career Readiness</b> Percent of Most Positive Responses	<p><b>- Participation Threshold Not Met -</b></p>	<b>Did Not Meet</b>
<b>FAFSA and College Application OR Job Application Completion*</b> FAFSA Completion Rate: 0%	<p>90%</p> <p>14%</p> <p>(n = 43)</p>	<b>Did Not Meet</b>

\* Self-reported data. See User Guide for performance tier cutpoints.