

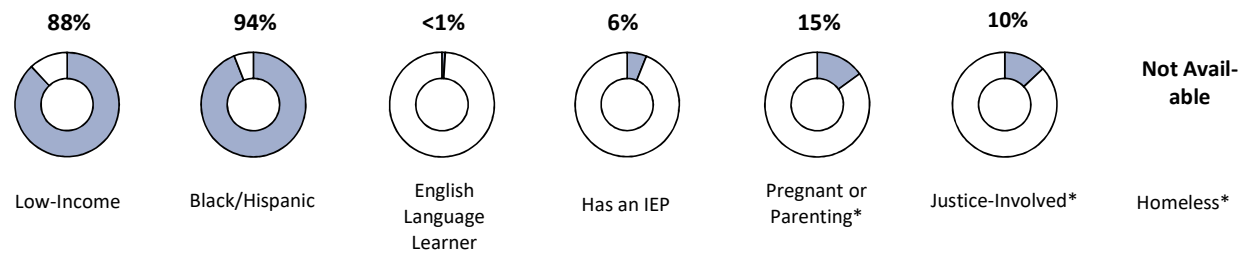
Ombudsman NW Accelerated

Program is no longer operational as of August 2023

Program Information

Governance	Contracted	Program Type	Accelerated
Address	2111 Eastburn Ave Philadelphia, PA 19138	Grade Range	9-12
Phone	-	Total Enrollment	82
Website	http://www.ombudsman.com/state/pa	Average Daily Membership	54

Student Demographics



Performance Tier	% of Metrics at Tier	2020-2021	2021-2022	2022-2023
------------------	----------------------	-----------	-----------	-----------

Overall Score



Exceptional



Target



Near Target



Did Not Meet



Program was eligible for 14 of 22 metrics

* Self-reported data

Achievement

Metric	Metric Value	Performance Tier
--------	--------------	------------------

Keystone Literature

Percent Proficient or Advanced

[Distribution by Performance Level](#)

Advanced: Insufficient Sample

Proficient: Insufficient Sample

Basic: Insufficient Sample

Below Basic: Insufficient Sample

- Insufficient Sample -

(n = 8)

Keystone Algebra

Percent Proficient or Advanced

[Distribution by Performance Level](#)

Advanced: Insufficient Sample

Proficient: Insufficient Sample

Basic: Insufficient Sample

Below Basic: Insufficient Sample

- Insufficient Sample -

(n = 6)

Keystone Biology

Percent Proficient or Advanced

[Distribution by Performance Level](#)

Advanced: Insufficient Sample

Proficient: Insufficient Sample

Basic: Insufficient Sample

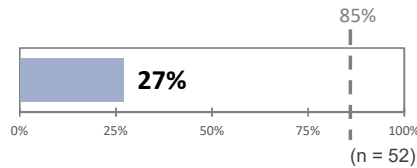
Below Basic: Insufficient Sample

- Insufficient Sample -

(n = 5)

Keystone Literature

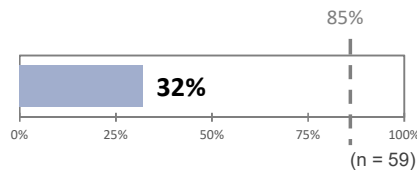
Participation Rate



Did Not Meet

Keystone Algebra

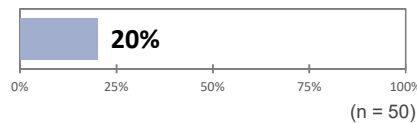
Participation Rate



Did Not Meet

Keystone Biology

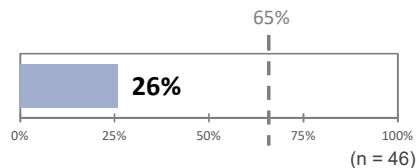
Participation Rate



Course Performance

Percent Earning at Least a C in All Major Subjects

% Earning at Least Bs: 11%



Did Not Meet

* Self-reported data. See User Guide for performance tier cutpoints.

Progress

Metric	Metric Value	Performance Tier
Credit Accumulation	<p>Target (75%)</p> <p>15%</p> <p>(n = 41)</p>	Did Not Meet
Literacy* Percent of Students Meeting Target <u>Outcomes for Students Not Meeting Target</u> Not Meeting Target: 61% Insufficient Test Records: 24%	<p>65%</p> <p>15%</p> <p>(n = 54)</p>	Did Not Meet
Numeracy* Percent of Students Meeting Target <u>Outcomes for Students Not Meeting Target</u> Not Meeting Target: 0% Insufficient Test Records: 24%	<p>65%</p> <p>76%</p> <p>(n = 54)</p>	Target
English Learner Achievement Percent Meeting Individual Growth Targets	- Not Available -	

* Self-reported data. See User Guide for performance tier cutpoints.

Climate

Metric	Metric Value	Performance Tier
Annual Retention Rate <u>Outcomes for Students Not Retained</u> Transferring Within Network: Not Applicable Transferring Outside Network: Not Applicable No Longer in a Philadelphia Public School: Not Applicable	- Not Applicable -	
% of Students Attending at Least 85% of Days <u>Distribution by Attendance Band</u> Attending at Least 95% of Days: 41% Attending 90-95% of Days: 22% Attending 85-90% of Days: 12% Attending 80-85% of Days: 9% Attending Less than 80% of Days: 16%	<p>Target (50%)</p> <p>76%</p> <p>(n = 82)</p>	Exceptional
Average Change in Student Attendance Rate	<p>0</p> <p>16%</p> <p>(n = 29)</p>	Exceptional
Percent of Students with No Out-of-School Suspensions	<p>95%</p> <p>100%</p> <p>(n = 82)</p>	Exceptional
Percent of Students Reducing OSS	<p>95%</p> <p>100%</p> <p>(n = 71)</p>	Exceptional
School Climate Score	- Participation Threshold Not Met -	Did Not Meet
School Instruction Score	- Participation Threshold Not Met -	Did Not Meet
School Relationship Score	- Participation Threshold Not Met -	Did Not Meet
Year-to-Year Academic Staff Retention Percent of teaching/academic support staff returning for the following academic year	- Not Included for Contracted Programs -	

* Self-reported data. See User Guide for performance tier cutpoints.

College & Career

Metric	Metric Value	Performance Tier
--------	--------------	------------------

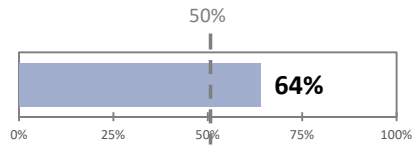
Annual Graduation Rate

Total Number of Students Graduating: 14

- Insufficient Sample -

(n = 10)

Student Survey: College & Career Readiness Percent of Most Positive Responses



Target

FAFSA and College Application OR Job Application Completion*

FAFSA Completion Rate: 0%

- Insufficient Sample -

(n = 14)

* Self-reported data. See User Guide for performance tier cutpoints.