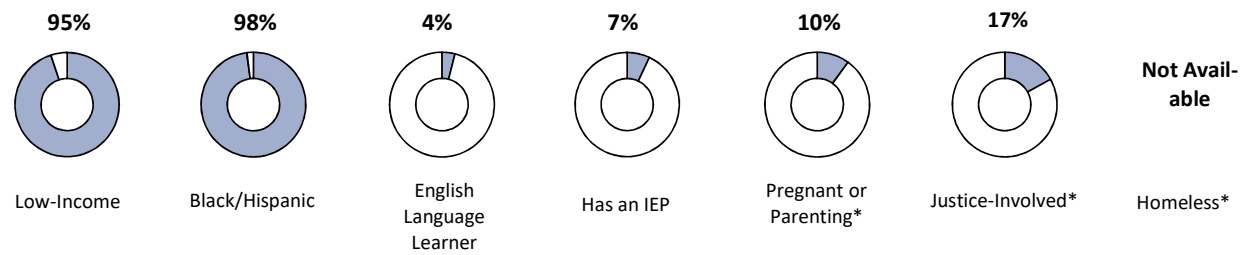


# Philadelphia Learning Academy West

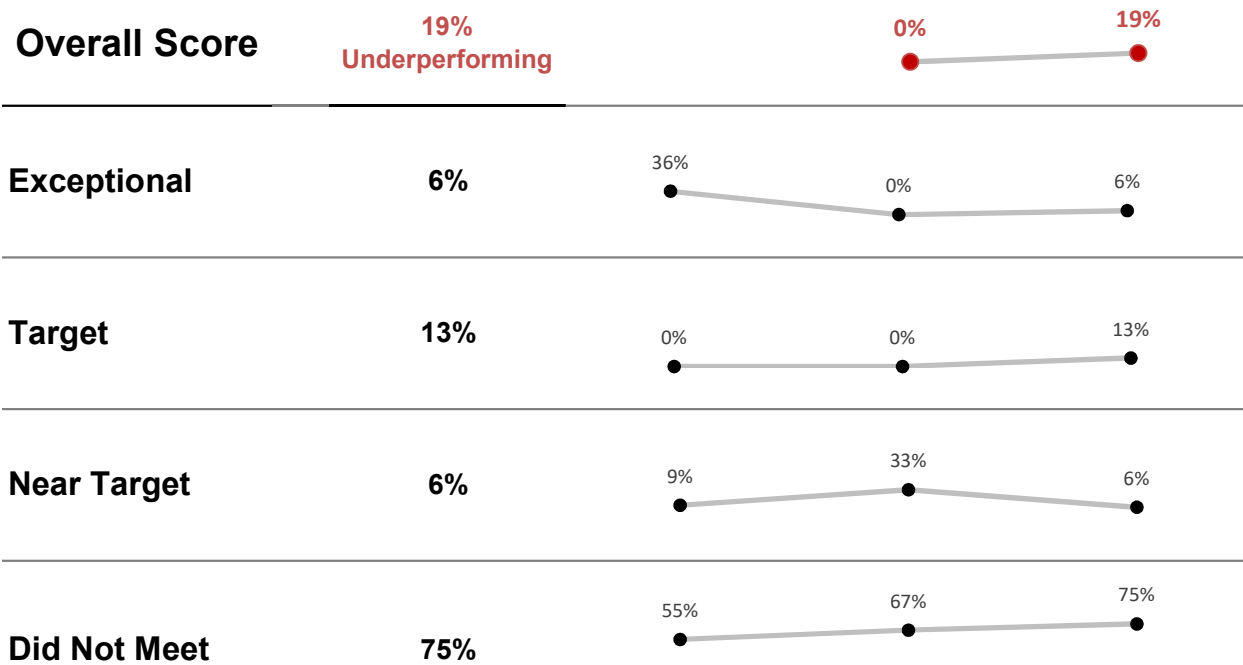
formerly Philadelphia Academy South  
Program Information

Governance	District	Program Type	Accelerated
Address	4300 Westminster Ave Philadelphia, PA 19104	Grade Range	9-12
Phone	215-400-9080	Total Enrollment	98
Website	<a href="https://plasouth.philasd.org/">https://plasouth.philasd.org/</a>	Average Daily Membership	58

## Student Demographics



Performance Tier	% of Metrics at Tier	2020-2021	2021-2022	2022-2023
------------------	----------------------	-----------	-----------	-----------



Program was eligible for 16 of 22 metrics

\* Self-reported data

# Achievement

Metric	Metric Value	Performance Tier
--------	--------------	------------------

## Keystone Literature

Percent Proficient or Advanced

[Distribution by Performance Level](#)

Advanced: Insufficient Sample

Proficient: Insufficient Sample

Basic: Insufficient Sample

Below Basic: Insufficient Sample

**- Insufficient Sample -**

(n = 14)

## Keystone Algebra

Percent Proficient or Advanced

[Distribution by Performance Level](#)

Advanced: Insufficient Sample

Proficient: Insufficient Sample

Basic: Insufficient Sample

Below Basic: Insufficient Sample

**- Insufficient Sample -**

(n = 15)

## Keystone Biology

Percent Proficient or Advanced

[Distribution by Performance Level](#)

Advanced: Insufficient Sample

Proficient: Insufficient Sample

Basic: Insufficient Sample

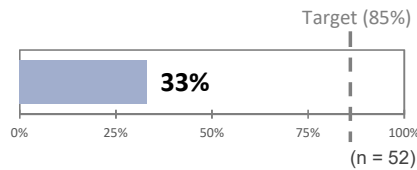
Below Basic: Insufficient Sample

**- Insufficient Sample -**

(n = 9)

## Keystone Literature

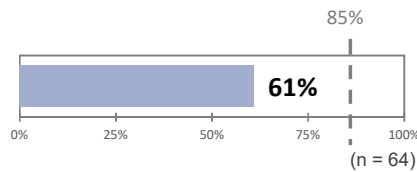
Participation Rate



**Did Not Meet**

## Keystone Algebra

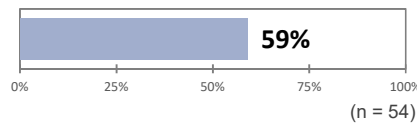
Participation Rate



**Did Not Meet**

## Keystone Biology

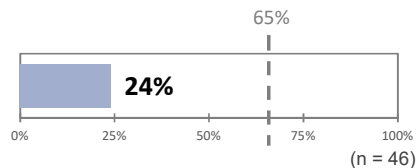
Participation Rate



## Course Performance

Percent Earning at Least a C in All Major Subjects

% Earning at Least Bs: 4%



**Did Not Meet**

\* Self-reported data. See User Guide for performance tier cutpoints.

# Progress

Metric	Metric Value	Performance Tier
Credit Accumulation	<p>Target (75%) 49% (n = 43)</p>	<b>Did Not Meet</b>
Literacy Percent of Students Meeting Target <u>Outcomes for Students Not Meeting Target</u> Not Meeting Target: 30% Insufficient Test Records: 59%	<p>65% 11% (n = 56)</p>	<b>Did Not Meet</b>
Numeracy Percent of Students Meeting Target <u>Outcomes for Students Not Meeting Target</u> Not Meeting Target: 32% Insufficient Test Records: 64%	<p>65% 4% (n = 56)</p>	<b>Did Not Meet</b>
English Learner Achievement Percent Meeting Individual Growth Targets	<b>- Not Available -</b>	

\* Self-reported data. See User Guide for performance tier cutpoints.

# Climate

Metric	Metric Value	Performance Tier
<b>Annual Retention Rate</b> <u>Outcomes for Students Not Retained</u> Transferring Within Network: 11% Transferring Outside Network: 9% No Longer in a Philadelphia Public School: 11%	<p>Target (70%) 68% (n = 44)</p>	Near Target
<b>% of Students Attending at Least 85% of Days</b> <u>Distribution by Attendance Band</u> Attending at Least 95% of Days: 5% Attending 90-95% of Days: 7% Attending 85-90% of Days: 9% Attending 80-85% of Days: 10% Attending Less than 80% of Days: 68%	<p>50% 21% (n = 98)</p>	Did Not Meet
<b>Average Change in Student Attendance Rate</b>	<p>0 -6% (n = 50)</p>	Did Not Meet
<b>Percent of Students with No Out-of-School Suspensions</b>	<p>95% 95% (n = 98)</p>	Target
<b>Percent of Students Reducing OSS</b>	<p>95% 100% (n = 85)</p>	Exceptional
<b>School Climate Score</b>	- Participation Threshold Not Met -	Did Not Meet
<b>School Instruction Score</b>	- Participation Threshold Not Met -	Did Not Meet
<b>School Relationship Score</b>	- Participation Threshold Not Met -	Did Not Meet
<b>Year-to-Year Academic Staff Retention</b> Percent of teaching/academic support staff returning for the following academic year	<p>70% 77% (n = 13)</p>	Target

\* Self-reported data. See User Guide for performance tier cutpoints.

# College & Career

Metric	Metric Value	Performance Tier
Annual Graduation Rate Total Number of Students Graduating: 19	- Insufficient Sample -	
	(n = 13)	
Student Survey: College & Career Readiness Percent of Most Positive Responses	- Participation Threshold Not Met -	Did Not Meet
FAFSA and College Application OR Job Application Completion* FAFSA Completion Rate: 0%	- Insufficient Sample -	
	(n = 19)	

\* Self-reported data. See User Guide for performance tier cutpoints.