

Overview of the School District of Philadelphia's School Profiles Page



THE SCHOOL DISTRICT OF
PHILADELPHIA



Welcome

Overview of the School District of Philadelphia's School Profiles Page

The School District of Philadelphia's School Profiles Page was created as a resource to store K-12 educational school data gathered throughout the District. The **Overview of the School District of Philadelphia's School Profiles Page** is the User Guide designed to introduce you to the site and School Profiles, as well as provide you with information to help you navigate and use the site to access information regarding overall school performance and answer questions using the data within the site.

This User Guide is designed to be an additional resource to provide you with support when accessing the website.

The School Profiles website enables you to access data to answer specific questions about the performance of the district or your neighborhood school. If you struggle to find the data you are looking for or are unsure of how to access the information on the website, this User Guide will walk you through the features in the website and provide you with the support needed to find the information you are looking for to answer your questions or direct you to additional resources within the District to do so.



Exploring the District School Profiles Home Page

After logging onto the website, the **School District of Philadelphia's Profiles** home page will appear. From the home page you will be able to navigate to any desired section on the site. The home page is separated into three major sections: 1) the header menu, 2) the sidebar, and 3) the data in the center of the screen focused on overall district performance.

Overview of the School District of Philadelphia's School Profiles Page

1

Header Menu:

The header menu includes a tab for comparing schools, and additional supports to better understand how to use the site.

2


Sidebar:

The sidebar includes all the schools within the District. It allows you to find a school by typing in the school name or filtering through a drop-down menu. You can also locate a school through its grouping.

3

Data Center:

The data in the center of the page, shows the overall performance rate for the entire District. The same data shown here, will be broken out for each school within the district when accessing additional data tabs.



1

[Compare Schools](#) [User Guide](#) [Video Tutorials](#) [Glossary](#)

SCHOOL PROFILES

Find out how a school or group of schools is performing.

Search for a school or narrow your search using the filters below. You can also view data for groups of schools (for example, all Charter Schools or all Network 1 Schools) by clicking on "School Groupings."

2

Find a School

School Groupings

Search for a school:

Begin typing

Search

Filters

+

ACADEMY AT PALUMBO

ACADEMY FOR THE MIDDLE YEARS (AMY) AT NORTHWEST

AD PRIMA CHARTER SCHOOL

ADAIRE, ALEXANDER SCHOOL

ALLEN, DR. ETHEL SCHOOL

ALLEN, ETHAN SCHOOL

ALLEN, RICHARD PREPARATORY CHARTER SCHOOL

ALLIANCE FOR PROGRESS CHARTER SCHOOL

ALTERNATIVE MIDDLE YEARS (AMY) AT JAMES MARTIN

ANDERSON, ADD B. SCHOOL

ARCHITECTURE AND DESIGN CHARTER SCHOOL (CHAD)

ARTHUR, CHESTER A. SCHOOL

ARTS ACADEMY AT BENJAMIN RUSH

ASPIRA CHARTER SCHOOL AT OLNEY

ASPIRA CHARTER SCHOOL AT STETSON

BACHE-MARTIN SCHOOL

BALDI MIDDLE SCHOOL

BARRY, JOHN ELEMENTARY SCHOOL

BARTON, CLARA SCHOOL

BARTRAM, JOHN HIGH SCHOOL

PHILADELPHIA PUBLIC SCHOOLS

School Year: 2019-2020
Next Update: February 2021

TOTAL ENROLLMENT

205,778

SCHOOL DISTRICT OF PHILADELPHIA
CENTRAL OFFICE
440 N. Broad Street
Philadelphia, PA 19130
p: 215-400-4000

SUPERINTENDENT
William R. Hite, Jr., Ed.D.

3

PSSA & KEYSTONE - LANGUAGE
ARTS PERFORMANCE

38%

0 POINT
INCREASE FROM
LAST YEAR

The percentage of students who scored Proficient or Advanced on the state standardized Language Arts exam.

PSSA & KEYSTONE - MATH
PERFORMANCE

20%

0 POINT
INCREASE FROM
LAST YEAR

The percentage of students who scored Proficient or Advanced on the state standardized math exam.

FOUR-YEAR GRADUATION

72%

0 POINT
INCREASE FROM
LAST YEAR

The percentage of students who graduated within four years.

READING ON GRADE LEVEL
(INSTRUCTIONAL)

49%

2 POINT
INCREASE FROM
LAST YEAR

The percentage of K-2 students who met their instructional reading level target for the year.

COLLEGE MATRICULATION

53%

2 POINT
DECREASE FROM
LAST YEAR

The percentage of graduates who enrolled in college the following fall.

TOTAL SCHOOLS

329

DISTRICT SCHOOLS 215
ENROLLMENT 124,184

CHARTER SCHOOLS 85
ENROLLMENT 66,655

ALTERNATIVE SCHOOLS 27
ENROLLMENT 3,207

MORE DISTRICT DATA

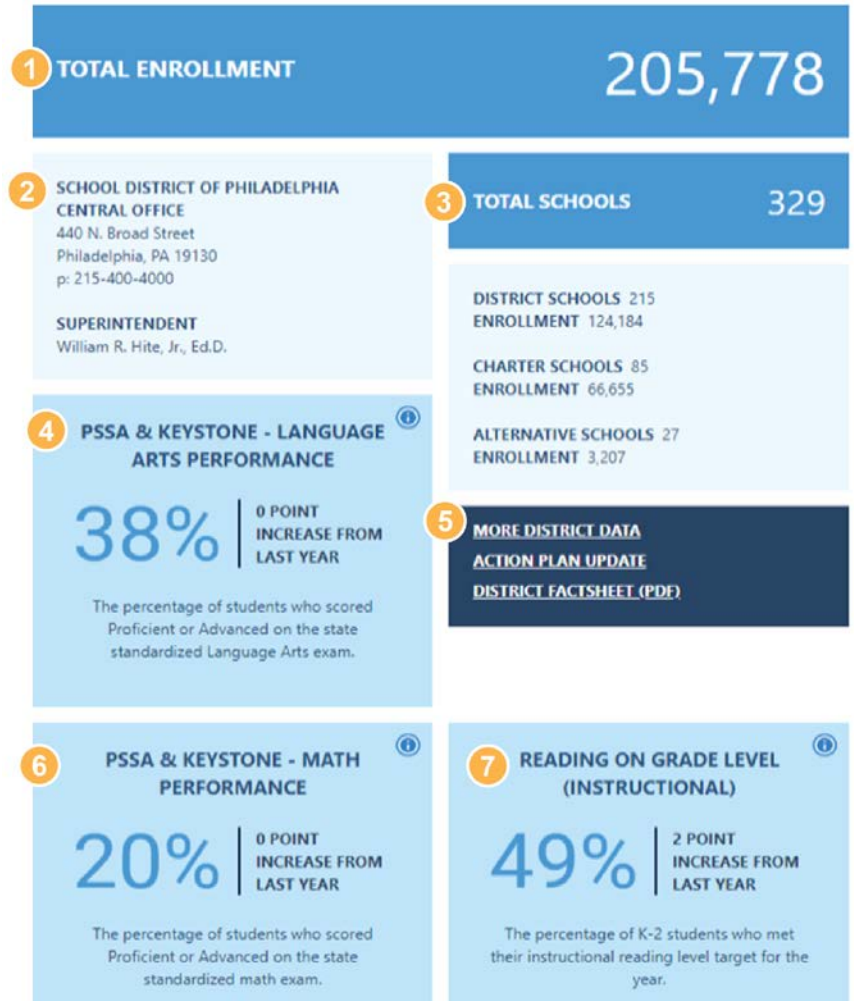
ACTION PLAN UPDATE

DISTRICT FACTSHEET (PDF)

2

Investigating the District Data Center

- 1 **Total Enrollment**
This number reflects the total number of students during the current school year.
- 2 **Contact Information**
This section provides contact information for the District, including the name of the Superintendent.
- 3 **Total Schools**
The district is made up of different types of schools. This section provides the total number of schools operated by each entity, District schools, charter schools, and alternative schools. The current enrollment for each type of school is also provided.
- 4 **PSSA & Keystone-Language Arts Performance**
The data in this section represents the percentage of students who scored Proficient or Advanced in Language Arts as measured by the Pennsylvania System of State Assessment (PSSA) and the Keystone Assessment which is for high school students only.
- 5 **More District Data**
This section provides active links to additional District data. The data found here include action plan updates and a District Factsheet.
- 6 **PSSA & Keystone Math Performance Data**
The data in this section represents the percentage of students who scored Proficient or Advanced in Mathematics as measured by the Pennsylvania System of State Assessment (PSSA) and the Keystone Assessment which is for high school students only.
- 7 **Reading on Grade Level (Instructional)**
The data show students, in Grades K-2, who met their instructional reading targets as measured by assessments other than the PSSA.



TIP

If you are confused as to what the data in the section shows, click the Information Icon in the upper right corner of each data section to learn more about the section's focus.

1

Four Year Graduation

The data in this tile show the percentage of students who graduated from high school within a four-year time frame.

2

College Matriculation

The percentage of high school students who attended college the first fall after graduation.

3

High Attendance

The data in this section provide the percentage of students who have attended school at least 95% of the days within the school year, which is less than 10 days absent throughout the school year. This section also includes whether the percentage is increasing or decreasing compared with the previous school year.

4

Positive Behavior

This section focuses on students who exhibit positive behavior during the school day. The data in this section represent the percentage of students throughout the District who have zero (0) suspensions from their school. It also provides information as to whether that percentage has increased or decreased from the previous school year.

1

FOUR-YEAR GRADUATION ⓘ

72%

0 POINT
INCREASE FROM
LAST YEAR

The percentage of students who graduated within four years.

2

COLLEGE MATRICULATION ⓘ

53%

2 POINT
DECREASE FROM
LAST YEAR

The percentage of graduates who enrolled in college the following fall.

3

HIGH ATTENDANCE ⓘ

46%

1 POINT
INCREASE FROM
LAST YEAR

The percentage of students who attended 95% or more of enrolled days.

4

POSITIVE BEHAVIOR ⓘ

91%

1 POINT
INCREASE FROM
LAST YEAR

The percentage of students who did not receive any out-of-school suspensions.

TIP

If there are questions regarding what the headings or vocabulary mean on the site, or if you need additional support to navigate the page, the header will be available on every page and it contains active links to provide support throughout your interaction.

Digging into the School Profiles

Using the Sidebar on the Home Page, select a school of your choice by typing in the name of the school or selecting from the drop-down menu. Every school name in the drop-down menu is an active link that will take you to the Overview Page of the selected school.

The School Overview Page is designed to mirror the District Home Page. Similar Features include:

- 1 Header**
This has additional supporting information.
- 2 Contact Information**
This section provides contact information for the School, including the Principal and Family Engagement Liaison.
- 3 Student Data Center**
This section includes High Attendance and Positive Behavior. The data also included in this section is PSSA ELA Test results. The data show the number of 3rd grade students proficient or advanced on the test. As with the other data results it also provides information as to whether the percentage has increased or decreased from the previous year.



Enrollment and Demographics

Student Enrollment and Demographics

1 The data within this section provides information on the number of students attending the school as well as the student subgroups who attend the school. There are four years of data displayed in each graph.

Enrollment

2 The Enrollment data represents the number of students enrolled at the school as of October 1st each school year.

School Aged Children Living in Catchment

3 This number reflects the actual number of District and charter students in this school's catchment area, not the number of students enrolled at this school. This number does not include students who are enrolled in private school or who are homeschooled. It is based on District and charter enrollment, not census data.

Economically Disadvantaged

4 The data in the tiles represent the percentage of students whose families participate in state and/or federal public assistance programs.

Students with IEP

5 The data tile represents the percentage of students with Individualized Education Plans

English Learners

6 The data tile represents the percentage of English Learners (EL) attending the school.

TIP

On this School Profiles page data are represented in two different ways. For all the data tiles focused on enrollment, the data are represented by numbers. For the tiles that focus on demographics, data are represented in percentages.



Reading and Language Arts

1

Reading and Language Arts

The SDP is committed to ensuring that every student is reading on or above grade level by age 8. This section includes data of K-3 student growth and achievement in literacy, including AIMSwebPlus data and PSSA results, as well as Keystone results for high school students.

2

PSSA ELA

The annual Pennsylvania System School Assessment (PSSA) in Reading and Language Arts is administered to students in grades 3-8. The data in this tile show the percentage of students who scored Proficient or Advanced on the annual assessment, which are both considered "passing."

3

Reading at Tier 1

SDP uses AimswebPlus, a literacy screening, benchmarking, and progress-monitoring tool, to assess literacy proficiency for students in grades K-8. Based on their scores, students are placed into three groups: Tier 1 (At Target), Tier 2 (Strategic Intervention), and Tier 3 (Intensive Intervention). The data in this tile shows the percentage of students who are in Tier 1 and at their target level.

4

Independent Reading Growth

This data tile displays the percentage of students who made an academic year's worth of growth in their independent reading level.

5

Instructional Reading on Target

The data in this tile shows the percentage of students who scored At Target based on their instructional reading level.

TIP

When reviewing high school Reading and Language Arts data, you will notice there is only one data tile focused on the Keystone Literature Performance data. At the elementary level, there are many more assessment tools to track student performance and growth.



Compare Schools User Guide Video Tutorials Glossary

VARE-WASHINGTON SCHOOL

OVERVIEW SCHOOL PROGRESS REPORT ENROLLMENT & DEMOGRAPHICS READING & LANGUAGE ARTS MATH & SCIENCE CLIMATE SURVEY RESULTS MORE INFO

1

READING AND LANGUAGE ARTS 2019-2020

We are committed to ensuring that every public school student is reading on or above grade level by age 8. This section includes measures of K-2 student growth and achievement in literacy, including AIMSweb data and PSSA results, as well as Keystone results for high school students.

Filters +

RELATED DATA AND REPORTS

[RESEARCH REPORTS ABOUT LITERACY AND READING](#)
[MORE ASSESSMENT DATA](#)
[PSSA/KEYSTONE OPEN DATA FILES](#)

2

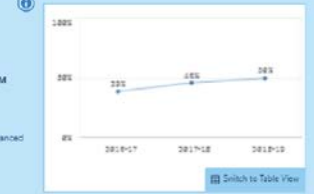
PSSA ELA % PROFICIENT OR ADVANCED

50%

4 POINT INCREASE FROM LAST YEAR

The percentage of students who scored Proficient or Advanced on the PSSA ELA exam.

+ More Details



3

READING AT TIER 1

59%

1 POINT DECREASE FROM LAST YEAR

The percentage of students who scored at Tier 1 on the aimswebplus assessment.

+ More Details



4

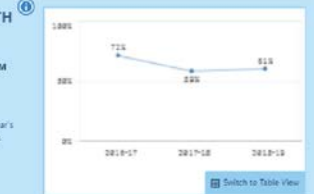
INDEPENDENT READING GROWTH

61%

2 POINT INCREASE FROM LAST YEAR

The percentage of students who made an academic year's worth of growth in their independent reading level.

+ More Details



5

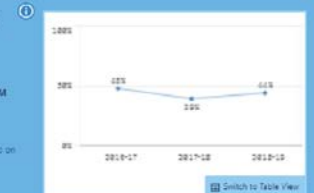
INSTRUCTIONAL READING ON TARGET

44%

5 POINT INCREASE FROM LAST YEAR

The percentage of students who scored At Target based on their instructional reading level.

+ More Details



Math and Science

1 Math and Science
This section includes data related to student academic achievement in math and science on the PSSA and Keystone exams.

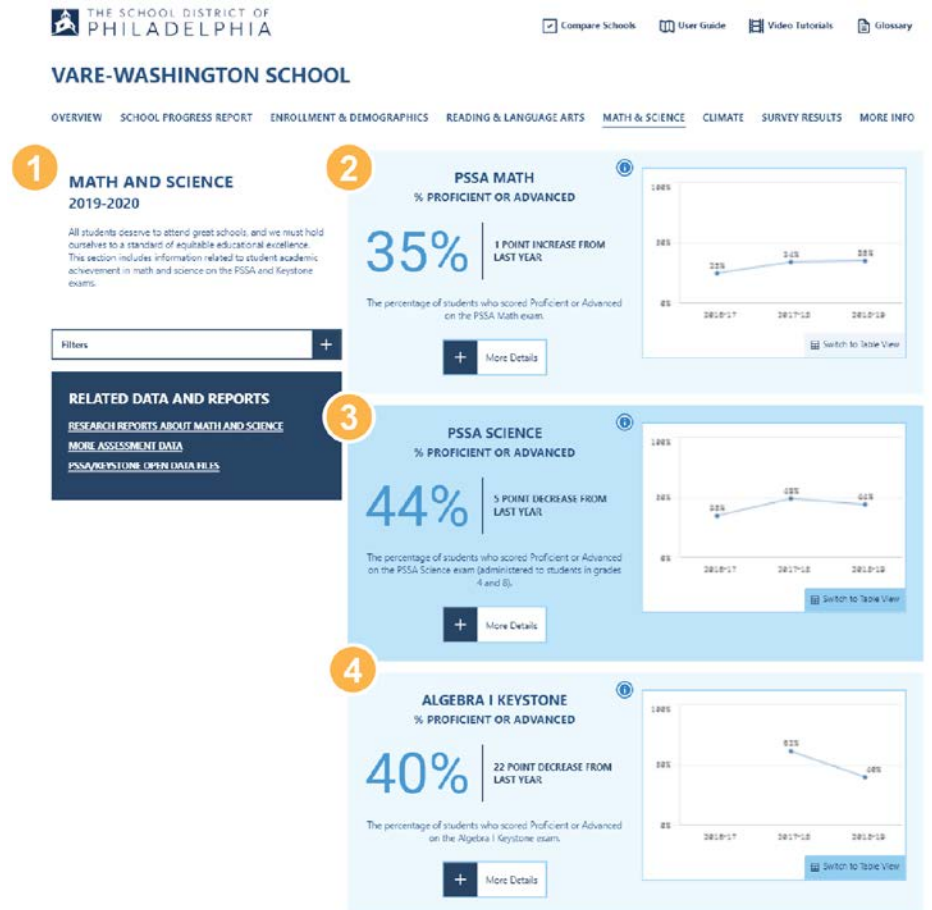
2 PSSA Math
The annual Pennsylvania System School Assessment (PSSA) in Math is administered to students in grades 3-8. The data in this tile show the percentage of students who scored Proficient or Advanced on the annual assessment, which is are considered "passing."

3 PSSA Science
The data in this tile shows the percentage of students who scored Proficient or Advanced on the annual assessment, which are both considered "passing". The PSSA science assessment is only administered to students in grades 4 and 8.

4 Algebra I Keystone
The Algebra I Keystone exam is an end-of-course assessment designed to assess proficiency in high school coursework. The data in this tile shows the percentage of students who scored Proficient or Advanced on the Keystone Algebra I assessment, which is considered "passing".

TIP

When looking for additional information for any report, click on the 'More Details' icon. You will receive additional graphs which break down data by subgroups such as grade level, race/ethnicity, gender, English Learner, and IEP status.



High School College and Career

A high school page resembles the K-8 school except for one difference, additional data under the College and Career tab at the top of the page. The additional high school data includes:

- 1 **Ninth Grade On-Track Rate**
The data in this tile shows the percentage of ninth grade students who ended the last school year on-track to graduate within four years.
- 2 **Four Year Graduation Rate**
The data in this tile shows the percentage of students who graduated from high school within a four-year time frame.
- 3 **College Matriculation**
The percentage of high school students who attended college the first fall after graduation.
- 4 **College Persistence**
The data tile shows the percentage of students who attended college the first fall after graduation and persisted by attending college the following year.
- 5 **AP, IB, & NOCTI Exams and Dual Enrollment Participation and Performance**
The data in this tile show the percentage of 12th grade students who passed at least one AP, IB, or NOCTI exam, or who passed a Dual-Enrollment course before the end of their senior year.
- 6 **SAT & ACT Exams Participation and Performance**
This tile shows the percentage of 12th grade students who met the college and career ready benchmark on the SAT or ACT **before** the end of their senior year.

TIP If you are interested in learning more about the data that is used to determine high school college and career readiness, there is a lot more information that can be found by clicking on the links in the Related Data and Links section.



Climate

Climate

For students to learn, school needs to be a safe and inviting place. We look at the overall climate in each school by measuring things like student attendance, suspension, serious incidents, and the condition of the building.

High Attendance

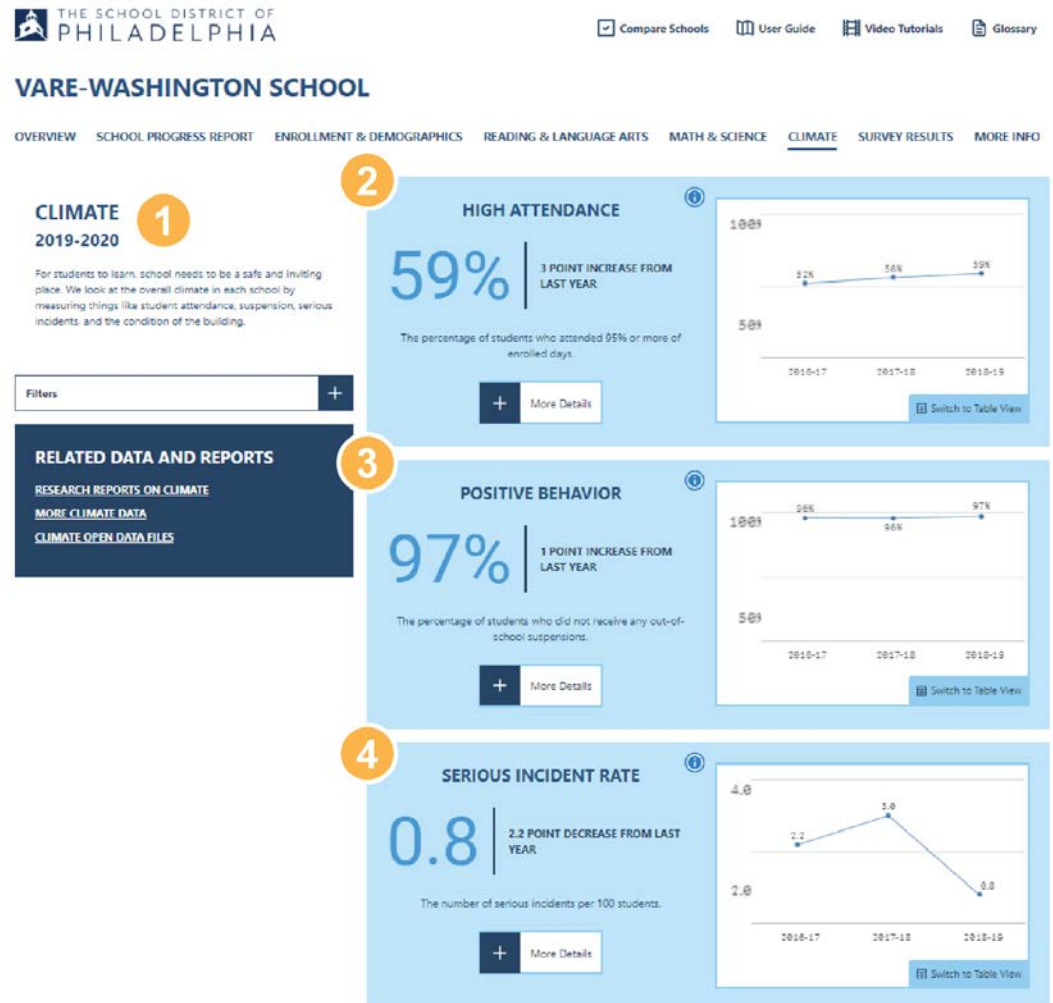
The data in this section provides the percentage of students who have attended school at least 95% of the days within the school year, which is less than 10 days absent throughout the school year. This section also includes whether the percentage is increasing or decreasing compared with the previous school year.

Positive Behavior

This section focuses on students who exhibit positive behavior during the school day. The data in this section represents the percentage of students throughout the District who have had zero (0) suspensions from their school. It also provides information as to whether that percentage has increased or decreased from the previous school year.

Serious Incident Rate

This data represents the number of serious incidences per 100 students. Serious incidents are those that involve a student or school staff member and are reported to SDP School Police.



Survey Results

Survey Results

Each spring, SDP's Office of Evaluation, Research, and Accountability (ERA) administers the District-Wide Survey to students, teachers, families, and principals. The surveys measure five key topics: Climate, Instruction, Professional Capacity, Leadership, and Parent & Guardian Community Ties. These data tiles present a high-level overview of recent results aligned to District priorities. There are additional graphs on the Survey page. The graphs on this page represent the stakeholder response rate only.

1

Student Response Rates

The data tile shows the percentage of students in grades 3-12 who responded to the survey. Surveys are not given to students in grades K-2.

2

Teacher Response Rates

The data tiles represent the percentage of teachers at the school who responded to the survey.

3

Household Response Rates

The data tiles represent the percentage of parents/guardians within a household who responded to the survey.

4

TIP

While other data on the website focuses on District and schools, the survey data page is where students, families, and teachers share their opinions on how the District and schools are meeting their expectations.

VARE-WASHINGTON SCHOOL

OVERVIEW SCHOOL PROGRESS REPORT ENROLLMENT & DEMOGRAPHICS READING & LANGUAGE ARTS MATH & SCIENCE CLIMATE SURVEY RESULTS MORE INFO

SURVEY RESULTS 2019-2020

Each spring, SDP's Office of Evaluation, Research, and Accountability (ERA) administers the District-Wide Survey to students, teachers, families, and principals. The surveys measure five key topics: Climate, Instruction, Professional Capacity, Leadership, and Parent & Guardian Community Ties. This section presents a high-level overview of recent results aligned to District priorities. For additional information, visit www.philasd.org/dwsresults.

Filters

RELATED DATA AND REPORTS

[RESEARCH REPORTS USING SURVEY DATA](#)
[MORE SURVEY DATA](#)
[SURVEY OPEN DATA FILES](#)

2

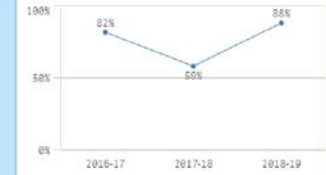
STUDENT RESPONSE RATE

88%

29 POINT INCREASE FROM
LAST YEAR

The percentage of students who responded to the District-Wide Survey.

+ More Details



Switch to Table View

3

TEACHER RESPONSE RATE

39%

9 POINT DECREASE FROM
LAST YEAR

The percentage of teachers who responded to the District-Wide Survey.

+ More Details



Switch to Table View

4

HOUSEHOLD RESPONSE RATE

45%

- POINT DECREASE FROM
LAST YEAR

The percentage of households who responded to the District-Wide Survey.

+ More Details



Switch to Table View

Comparing Schools

Understanding the data reports will be helpful when using the Compare Schools Feature.

Search

To compare schools, select up to four schools from the search list. The school list menu and filter boxes can be used to select the schools of your choice. Check the boxes next to the schools you have selected to compare.

Selected School List

The Selected School List will appear above the school names after the schools are selected. Once the boxes are checked, the selected school list will appear.

Compare Button

Click the Compare Button to generate the report.



COMPARE SCHOOLS

- ☒ Compare Schools
- User Guide
- Video Tutorials
- Glossary

SEARCH

Select up to 4 schools to compare performance as well as to view contact information and to see school locations on a map. Select from the full list of schools below, or use filters to narrow down the list. When you have made your selections, click "compare."

TOTAL SCHOOLS: 327

Filters +

1

Search by School Name or Zip Code...

Search

2

You have selected 4 schools to compare.

1. Academy at Palumbo ☒ 2. Academy for the Middle Years (AMY) at Northwest ☒ 3. Ad Prima Charter School ☒ 4. Adaire, Alexander School ☒

3

Compare

SCHOOL NAME	GRADES	SPR	ZIP CODE	LOCATION
<input checked="" type="checkbox"/> Academy at Palumbo	9-12	69%	19147	1100 CATHARINE ST PHILADELPHIA, PA 19147
<input checked="" type="checkbox"/> Academy for the Middle Years (AMY) at Northwest	6-8	49%	19128	6000 RIDGE AVE PHILADELPHIA, PA 19128
<input checked="" type="checkbox"/> Ad Prima Charter School	K-8	68%	19151	1922 N 63RD ST PHILADELPHIA, PA 19151
<input checked="" type="checkbox"/> Adaire, Alexander School	K-8	60%	19125	1300 E PALMER ST PHILADELPHIA, PA 19125
<input type="checkbox"/> Allen, Dr. Ethel School	K-8	33%	19132	3200 W LEHIGH AVE PHILADELPHIA, PA 19132

School Comparison Report

The School Comparison Report provides a table of data housed within the website. Each selected school is at the top of the table and a variety of data is listed on the side of the table. This chart allows users to quickly compare multiple data sets for a variety of schools.



- ☒ Compare Schools
- User Guide
- Video Tutorials
- Glossary

COMPARE SCHOOLS

	ACADEMY AT PALUMBO	ACADEMY FOR THE MIDDLE YEARS (AMY) AT NORTHWEST	AD PRIMA CHARTER SCHOOL	ADAIRE, ALEXANDER SCHOOL
ADDRESS	1100 CATHARINE ST	6000 RIDGE AVE	1922 N 63RD ST	1300 E PALMER ST
GRADES SERVED	9-12	6-8	K-8	K-8
ENROLLMENT	1,057	319	693	447
ADMISSIONS TYPE	SPECIAL ADMIT	SPECIAL ADMIT	CITYWIDE	NEIGHBORHOOD
PRINCIPAL	KIANA THOMPSON	JODAN FLOYD	NIYA BLACKWELL	ANNA JENKINS
NETWORK	NETWORK 1	NETWORK 9	CHARTERS	NETWORK 3
CITY COUNCIL DISTRICT	2	4	4	5
OVERALL SPR SCORE	69%	49%	68%	60%
HIGH ATTENDANCE	68%	70%	85%	69%
POSITIVE BEHAVIOR	99%	97%	89%	100%
READING	-	-	44%	74%
PSSA ELA TEST	-	-	49%	76%
PSSA & KEYSTONE - LANGUAGE ARTS PERFORMANCE	85%	63%	50%	55%
PSSA & KEYSTONE - MATH PERFORMANCE	50%	18%	24%	37%
FOUR-YEAR GRADUATION	97%	-	-	-
COLLEGE MATRICULATION	79%	-	-	-

Practicing using data to answer questions is an important first step in becoming comfortable using the school profiles. Below are 4 questions that need data from the School Profiles pages to answer. The questions are just samples to provide you a starting point. Begin by using your student(s)' school or a neighborhood school. Take notes as to which data you accessed and where it was found to answer the questions.

Data Question 1:

Are students with disabilities in my child's school or a neighborhood school being successful in learning to read by the end of Grade 3?

What data do you need to access to answer this question?

Data Question 2:

Do students who are economically disadvantaged in my neighborhood school show as much success in ELA and Math as students who do not?

What data do you need to access to answer this question?

Data Question 3:

Has enrollment increased for students with IEPs and English Learners within my child's school or a neighborhood school?

What data do you need to access to answer this question?

Data Question 4:

Which high school within your geographical area has shown the most growth over the past school year in the area of college and career? Use the compare school function to compare up to 4 schools.

What data do you need to access to answer this question?

Next Steps

- Who else in your school or community needs to know this material?
- What are the key concepts that you will want to share with others?
- What technical information would be helpful for others in your school or community?
- What will be your plan to make sure this occurs?